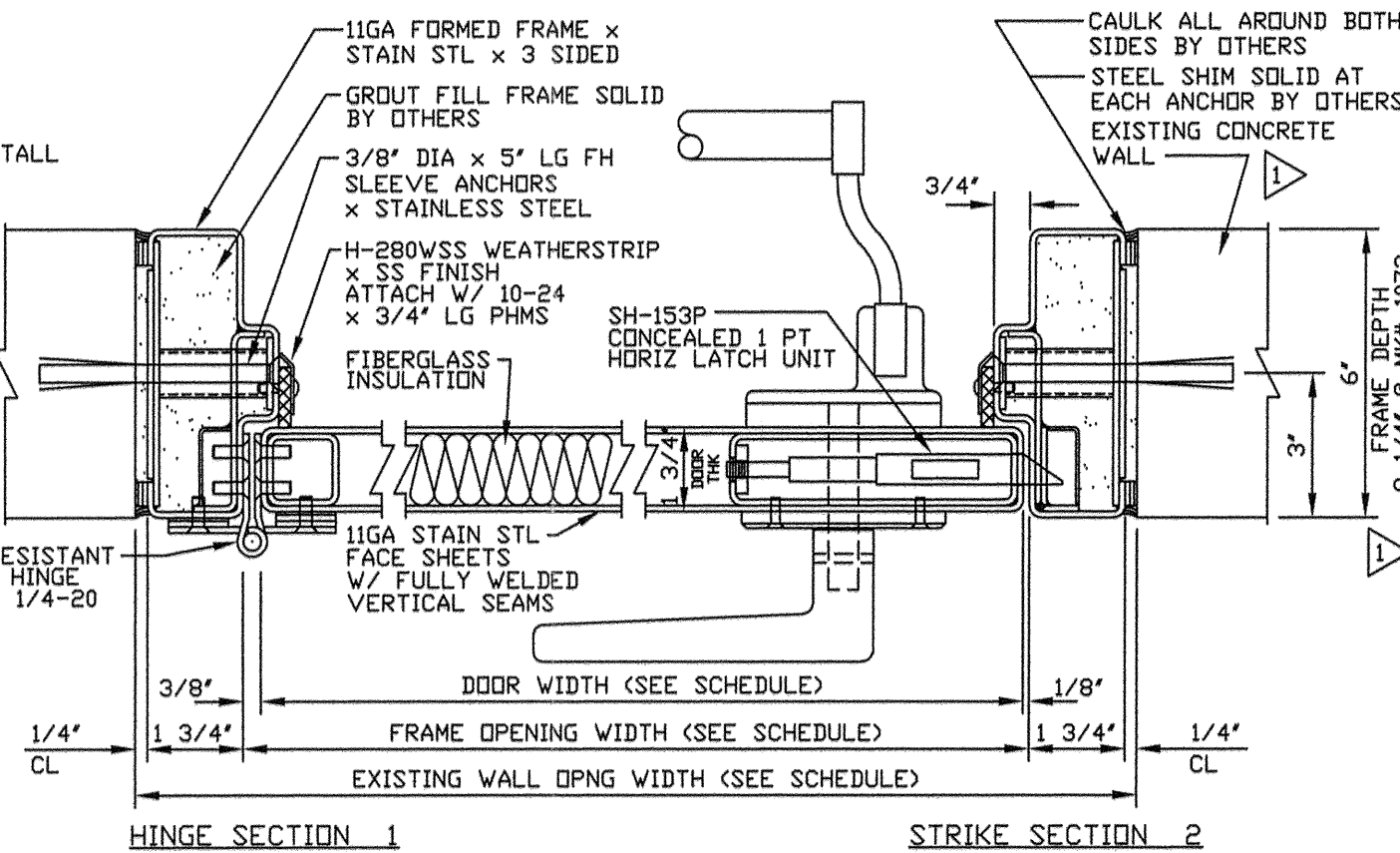
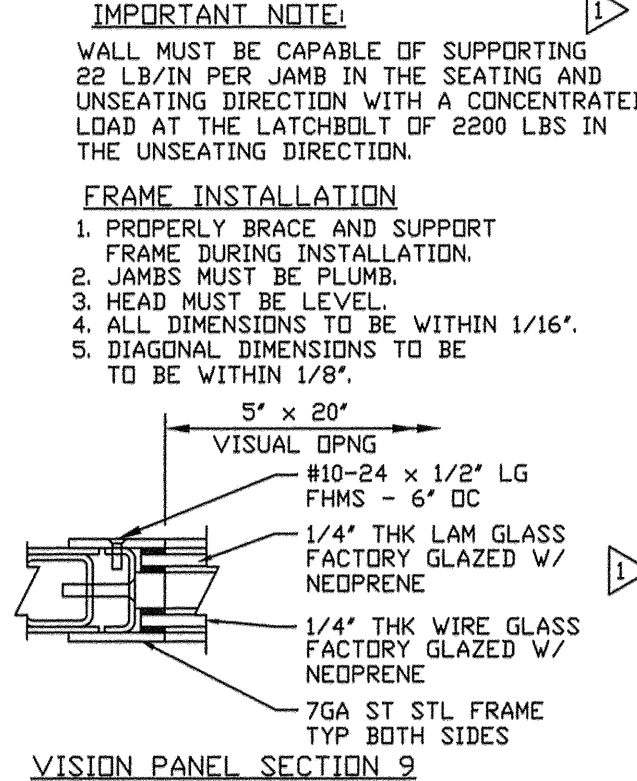
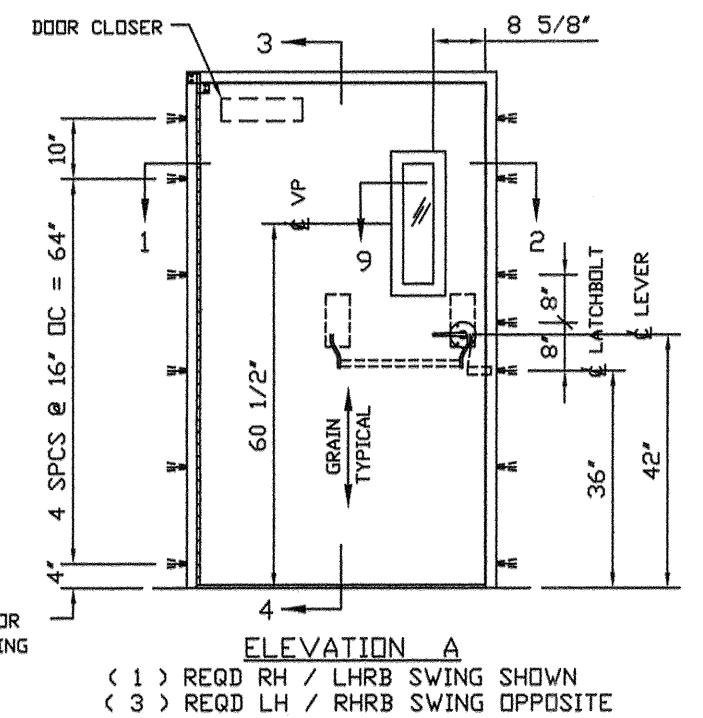
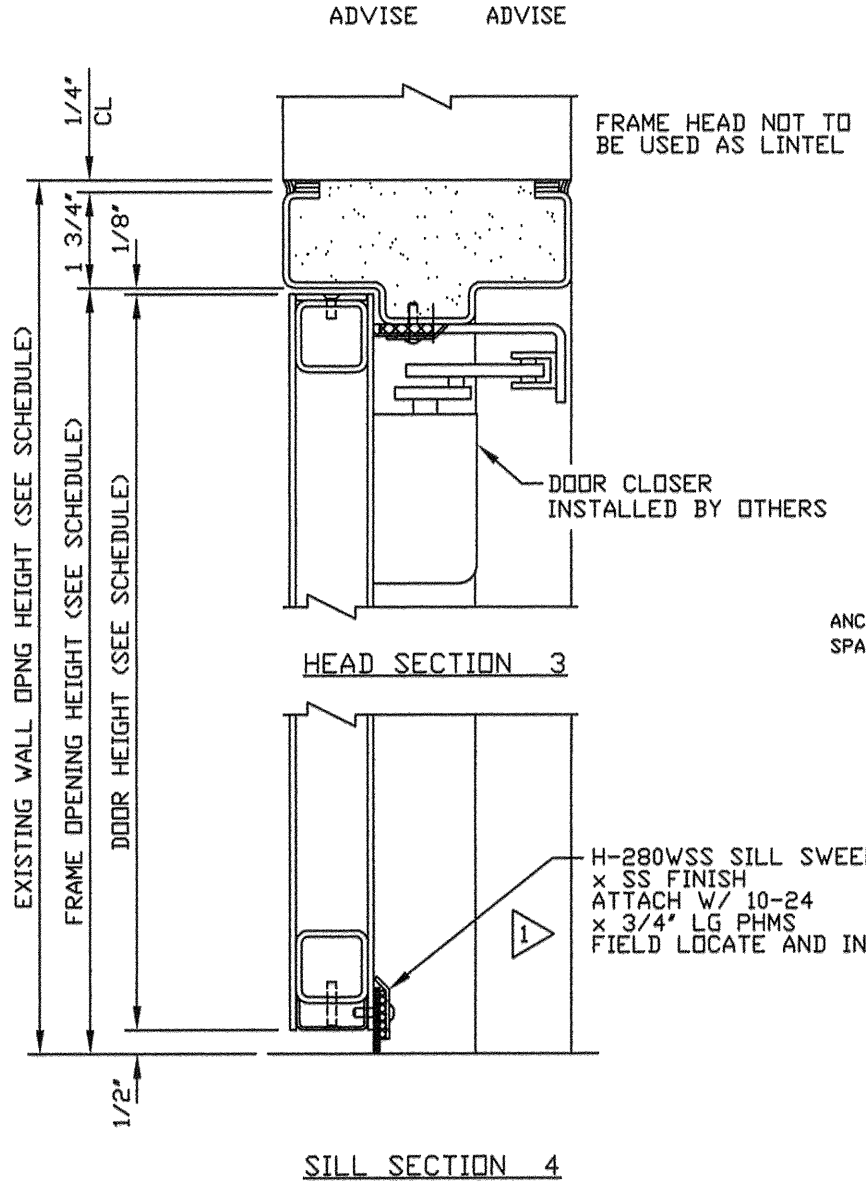
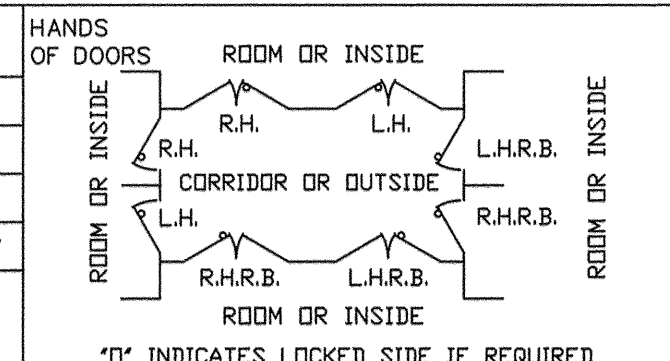


| QUAN. | MARK NO | HAND | LOCATION | | EXISTING WALL OPNG | | FRAME OPNG | | DOOR SIZE | | DOOR ELEV | SECTIONS | | | | REMARKS |
|-------|---------|------|------------|-----------|--------------------|--------|------------|--------|-----------|---------|-----------|----------|--------|------|------|--------------------|
| | | | HINGE SIDE | STOP SIDE | WIDTH | HEIGHT | WIDTH | HEIGHT | WIDTH | HEIGHT | | HINGE | STRIKE | HEAD | SILL | |
| 1 | 406A | LHRB | | | 52" | 86" | 48" | 84" | 47 1/2" | 83 3/8" | A | 1 | 2 | 3 | 4 | FRAME DEPTH 6" |
| 1 | 400A | RHRB | | | 52" | 86" | 48" | 84" | 47 1/2" | 83 3/8" | A | 1 | 2 | 3 | 4 | FRAME DEPTH 6" |
| 1 | 402 | RHRB | | | 52" | 86" | 48" | 84" | 47 1/2" | 83 3/8" | A | 1 | 2 | 3 | 4 | FRAME DEPTH 6" |
| 1 | 1073 | RHRB | | | 52" | 86" | 48" | 84" | 47 1/2" | 83 3/8" | A | 1 | 2 | 3 | 4 | FRAME DEPTH 9 1/4" |



IMPORTANT NOTE:
WALL MUST BE CAPABLE OF SUPPORTING 22 LB/IN PER JAMB IN THE SEATING AND UNSEATING DIRECTION WITH A CONCENTRATED LOAD AT THE LATCHBOLT OF 2200 LBS IN THE UNSEATING DIRECTION.

FRAME INSTALLATION

1. PROPERLY BRACE AND SUPPORT FRAME DURING INSTALLATION.
2. JAMBS MUST BE PLUMB.
3. HEAD MUST BE LEVEL.
4. ALL DIMENSIONS TO BE WITHIN 1/16".
5. DIAGONAL DIMENSIONS TO BE TO BE WITHIN 1/8".


- NOTES:**
1. DESIGN PRESSURE: 120 PSF STATIC EQUIVALENT PRESSURE W/ 100% REBOUND
 2. FIRE RATING: NONE
 3. CERTIFICATE OF NON-COMBUSTIBLE CONSTRUCTION
 4. DOOR / FRAME FINISH: APPROX #4 BRUSHED STAINLESS STEEL
 5. HARDWARE BY PDI:
 - (1) CONTINUOUS HINGE-11GA SS LEAVES x 1/4" DIA STAIN STL PIN x BRUSHED FINISH x ANTI-SAG FEATURE
 - (1) SH-153P 1 PT HORIZONTAL HARDWARE LEVER x PANIC BAR x SS TRIM x US32D FINISH FUNCTION: PASSAGE
 - (1) YALE #4400 DOOR CLOSER x PA x ALUM FINISH
 - (1) PDI H-280WSS WEATHERSTRIP x SS FINISH
 - (1) PDI H-280WSS SILL SWEEP x SS FINISH
 6. HARDWARE BY OTHERS: ANY HARDWARE NOT LISTED ABOVE

| 8/14/09 | 1 | PER APPROVED DWGS AND EMAIL | MF |
|---------|----|-----------------------------|----|
| DATE | MK | DESCRIPTION | BY |

REVISIONS

CUSTOMER:

PROJECT:


 PROTECTIVE DOOR INDUSTRIES
 HARVEY, ILLINOIS 60426

| | | | |
|--|---------|---------|---|
| TITLE | | | |
| DB-100-SS BLAST RESISTANT DOOR AND FRAME | | | |
| DWG BY | MF | CHKD BY | |
| DATE | 7/14/09 | DATE | |
| SCALE | | QA | |
| DWG NO. | 1816-09 | SHT NO. | 1 |

NOTICE

THIS IS A CONFIDENTIAL DISCLOSURE LOANED BY PROTECTIVE DOOR IND. SUBJECT TO THE CONDITIONS THAT IT AND THE INFORMATION EMBODIED THEREIN SHALL BE USED ONLY FOR RECORD AND REFERENCE PURPOSES, SHALL NOT BE USED OR CAUSED TO BE USED IN ANYWAY PREJUDICIAL TO THE INTEREST OF THIS COMPANY, SHALL NOT BE REPRODUCED OR COPIED IN WHOLE OR IN PART, AND SHALL BE RETURNED UPON REQUEST.

GENERAL CONDITIONS

P.D.I. WILL NOT BE LIABLE FOR ANY ERRORS OCCURRING TO OTHER TRADES THROUGH THE USE OF THIS DRAWING. CONTRACTOR TO CHECK ALL DIMENSIONS AT JOB AS P.D.I. ASSUMES NO RESPONSIBILITY FOR GENERAL BUILDING DIMENSIONS.

PLOT SCALE 1=4
1816-1

MASTER