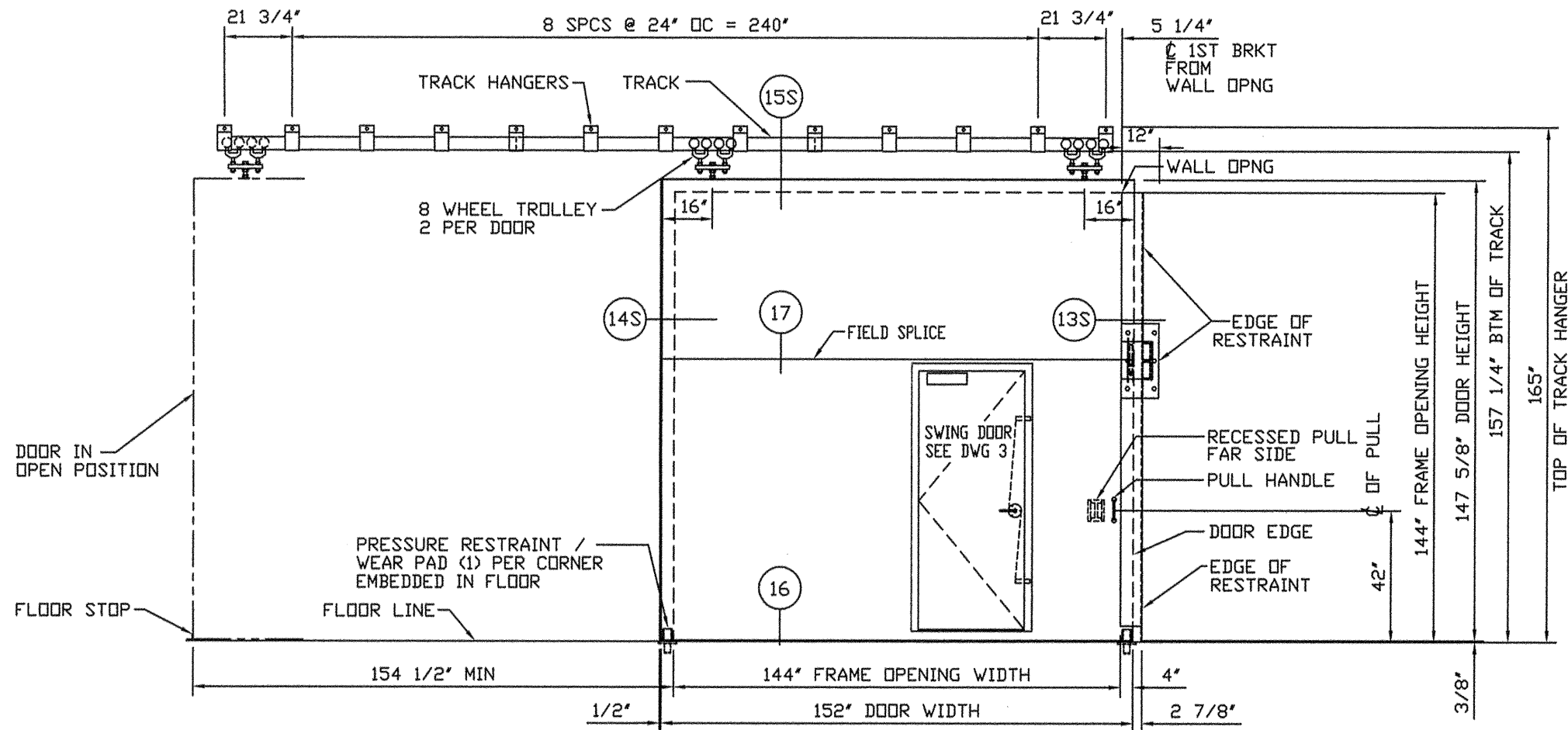


QUAN.	MARK NO.	HAND	LOCATION		EXISTING WALL OPNG		FRAME OPNG		DOOR SIZE		DOOR ELEV	SECTIONS				REMARKS
			HINGE SIDE	STOP SIDE	WIDTH	HEIGHT	WIDTH	HEIGHT	WIDTH	HEIGHT		LEAD	TRAIL	HEAD	SILL	
1	119	RH	EXTERIOR	SHOP 118	144"	144"	NA	NA	152"	147 5/8"	E	13S	14S	15S	16	SPLICE SECTION 17
1	121	LH	EXTERIOR	SHOP 118	144"	144"	NA	NA	152"	147 5/8"	E	13S	14S	15S	16	SPLICE SECTION 17



ELEVATION E - INTERIOR

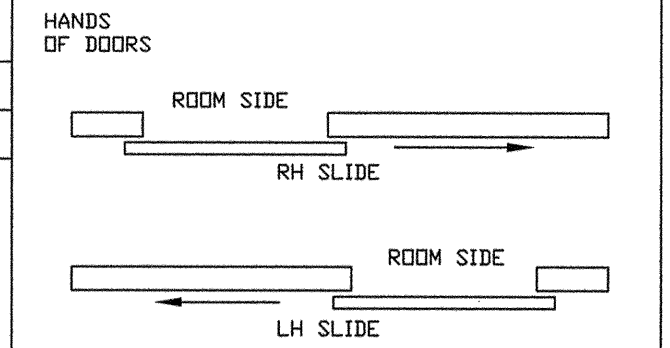
(1) REQD - LH SLIDE SHOWN
(1) REQD - RH SLIDE OPPOSITE

DOOR WEIGHT:
APPROX 3600 LBS

NOTE: PRESSURE RESTRAINTS
NOT SHOWN FOR CLARITY

IMPORTANT NOTE:

WALL AT JAMBS MUST BE CAPABLE OF SUPPORTING A MAX 145 LBS/IN IN THE SEATING AND UNSEATING DIRECTION.
WALL AT JAMBS MUST BE CAPABLE OF SUPPORTING 8056 LBS IN THE SEATING AND UNSEATING DIRECTION AT EACH JAMB SUPPORT (90° AFF).
THE FLOOR AND WALL MUST BE CAPABLE OF SUPPORTING 6840 LBS IN THE SEATING AND UNSEATING DIRECTION AT BTM SUPPORT.



- NOTES:**
- DESIGN PRESSURE: 2.0 PSI STATIC EQUIVALENT PRESSURE WITH 100% REBOUND
 - FIRE RATING: NONE
 - FINISH: KEM KROMIK GREY PRIMER
 - HARDWARE BY PDI:
 - (1) PAIR RICHARDS-WILCOX #8881-P17 x PAINTED FIN 8 WHEEL TROLLEYS WITH 1" DIA PENDANT RATED 5000 LBS
 - (3) RICHARDS-WILCOX #888-P330 BOX TRACK x PAINTED FINISH x 96" LG (RATED 5000 LBS)
 - (11) RICHARDS-WILCOX #888-P338 TRACK HANGER BRACKETS x PAINTED FINISH
 - (2) RICHARDS-WILCOX #888-P341 JOINT TRACK HANGER BRACKETS x PAINTED FINISH
 - (2) RICHARDS-WILCOX #888-P344 END BLIND x GALV
 - (1) RW #470-P1 RECESSED PULL x PAINTED FINISH
 - (1) RW #191-P1 PULL HANDLE x PAINTED FINISH
 - (2) RESTRAINT / STAY ROLLER x PAINTED FINISH
 - (1) SET PRESSURE RESTRAINTS x USP FINISH
 - (1) FLOOR STOP x USP FINISH
 - (1) SET PEMKO #18175CP WEATHERSTRIP x ALUM FINISH
 - (1) SWING DOOR HARDWARE - SEE SHT 3
 - (1) ELECTRIC OPERATOR - SEE SHT 14
 - HARDWARE BY OTHERS: ANY HARDWARE NOT LISTED ABOVE

DATE	MK	DESCRIPTION	BY

REVISIONS

CUSTOMER: _____
PROJECT: _____



PROTECTIVE DOOR INDUSTRIES
HARVEY, ILLINOIS 60426

**TITLE DB-200-SL SLIDING DOOR
ELEVATION**

DWG BY	MF	CHKD BY	
DATE	11/18/10	DATE	
SCALE		QA	
DWG NO.	1905-10	SHT NO.	10

NOTICE
THIS IS A CONFIDENTIAL DISCLOSURE LOANED BY PROTECTIVE DOOR IND. SUBJECT TO THE CONDITIONS THAT IT AND THE INFORMATION EMBODIED THEREIN SHALL BE USED ONLY FOR RECORD AND REFERENCE PURPOSES, SHALL NOT BE USED OR CAUSED TO BE USED IN ANYWAY PREJUDICIAL TO THE INTEREST OF THIS COMPANY, SHALL NOT BE REPRODUCED OR COPIED IN WHOLE OR IN PART, AND SHALL BE RETURNED UPON REQUEST.

GENERAL CONDITIONS
P.D.I. WILL NOT BE LIABLE FOR ANY ERRORS OCCURRING TO OTHER TRADES THROUGH THE USE OF THIS DRAWING.
CONTRACTOR TO CHECK ALL DIMENSIONS AT JOB AS P.D.I. ASSUMES NO RESPONSIBILITY FOR GENERAL BUILDING DIMENSIONS.

PLOT SCALE 1=4
1905-10

MASTER