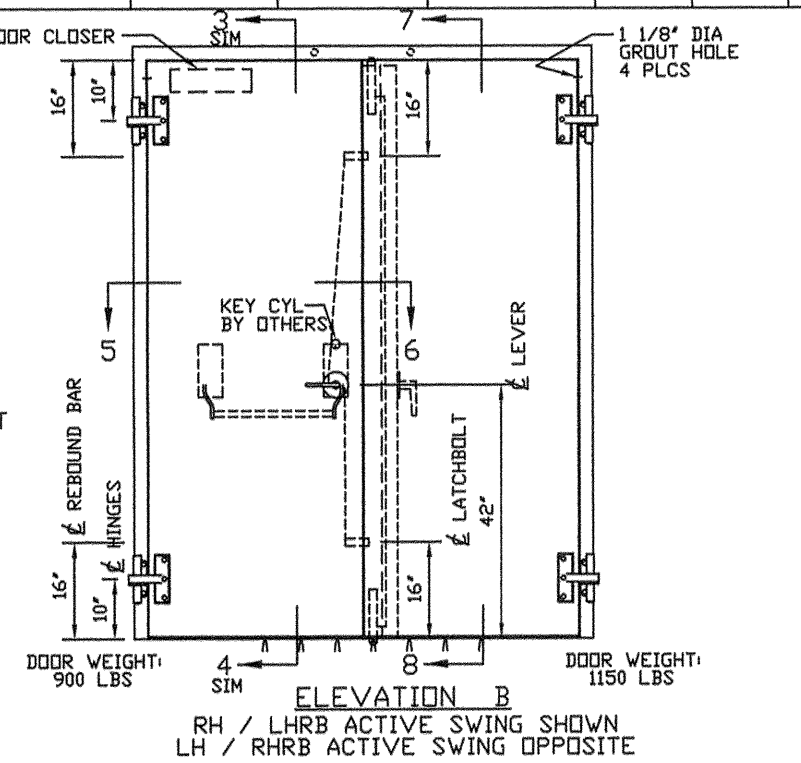
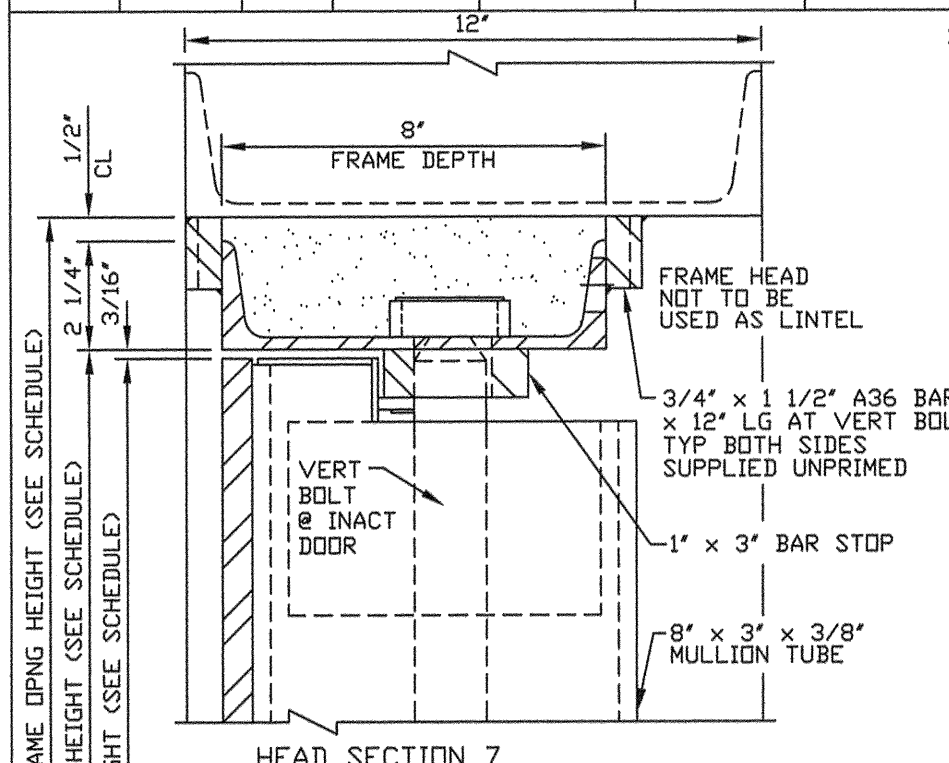
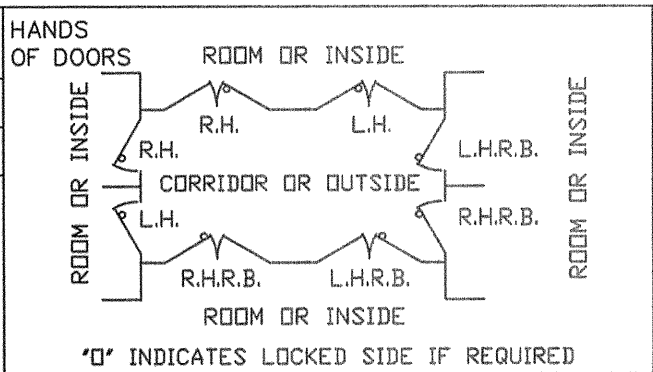
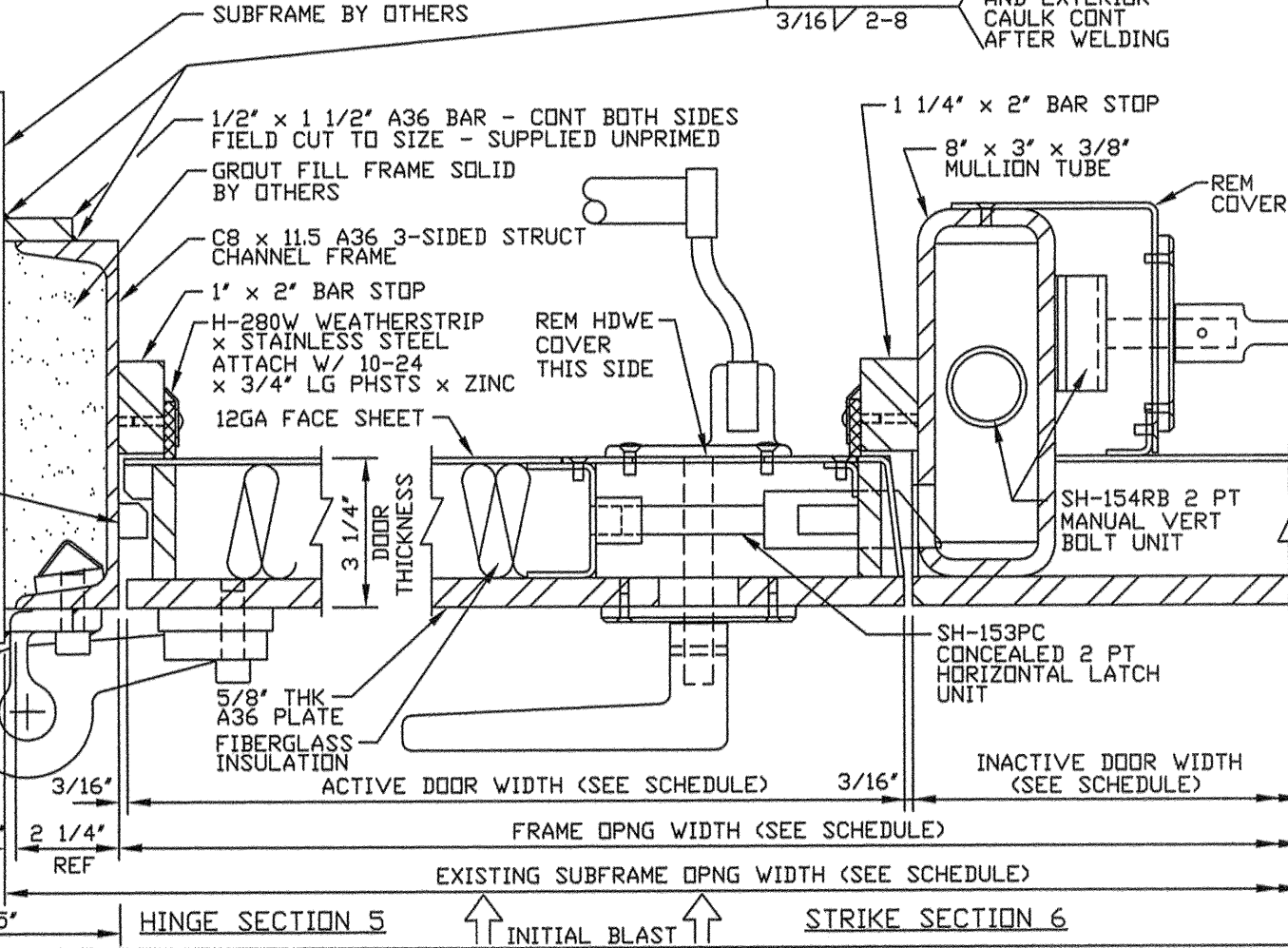
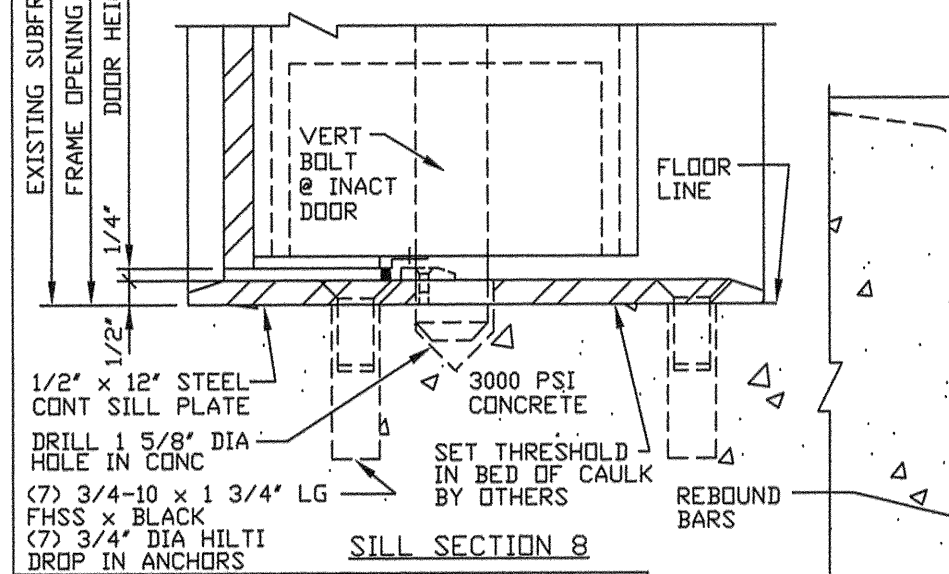
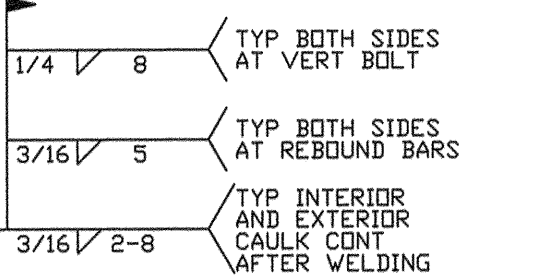


QUAN.	MARK NO	HAND	LOCATION		EXISTING WALL OPNG		FRAME OPNG		DOOR SIZE		DOOR ELEV	SECTIONS				REMARKS
			HINGE SIDE	STOP SIDE	WIDTH	HEIGHT	WIDTH	HEIGHT	WIDTH	HEIGHT		HINGE	STRIKE	HEAD	SILL	
1 PR	S2	RHRB ACTIVE	EXTERIOR	INTERIOR	77 1/8"	98 3/4"	72"	96"	35 5/8" 35 13/16"	95 1/16"	B	5	6	3 / 7	4 / 8	



**IMPORTANT NOTE:**  
WALL MUST BE CAPABLE OF SUPPORTING 221 LB/IN PER JAMB IN THE SEATING DIRECTION AND UNSEATING CONCENTRATED LOADS AS FOLLOWS:  
VERT BOLT AT HEAD 12557 LBS AT REBOUND BARS 6279 LBS  
FLOOR MUST BE CAPABLE OF SUPPORTING 23817 LBS AT THE INACT DOOR VERT BOLT

- FRAME INSTALLATION**
- PROPERLY BRACE AND SUPPORT FRAME DURING INSTALLATION.
  - JAMBS MUST BE PLUMB.
  - HEAD MUST BE LEVEL.
  - ALL DIMENSIONS TO BE WITHIN 1/16".
  - DIAGONAL DIMENSIONS TO BE TO BE WITHIN 1/8".



- NOTES:**
- DESIGN PRESSURE: Pr = 12 PSI SEATING PRESSURE FOR 19.17 MS W/ REBOUND AS CALCULATED
  - FIRE RATING: NONE
  - FINISH: KEM KROMIK GREY PRIMER
  - HARDWARE BY PDI:
    - PR SH-461 6 WAY ADJUST HINGES x USP FINISH
    - SH-153PC 2 PT HORIZONTAL HARDWARE LEVER x EXIT BAR TRIM x US32D FINISH x LESS CYL @ ACTIVE DOOR
    - SH-154RB 2 PT VERT MANUAL HARDWARE LEVER x NO EXT TRIM x US32D FINISH @ INACTIVE DOOR
    - YALE #406 CLOSER x PA x ALUM FINISH @ ACTIVE DOOR
    - PDI H-280W WEATHERSTRIP x SS FINISH
    - PDI H-344 SILL SWEEPS x USP FINISH
    - PEMKO #196A THRESHOLD x ALUM
    - PDI 1/2" x 12" STEEL THRESHOLD x USP FINISH
  - HARDWARE BY OTHERS:
    - RIM KEY CYLINDER - IF POSSIBLE SHIP TO PDI FOR FACTORY INSTALLATION

**NOTICE**  
THIS IS A CONFIDENTIAL DISCLOSURE LOANED BY PROTECTIVE DOOR IND. SUBJECT TO THE CONDITIONS THAT IT AND THE INFORMATION EMBODIED THEREIN SHALL BE USED ONLY FOR RECORD AND REFERENCE PURPOSES, SHALL NOT BE USED OR CAUSED TO BE USED IN ANYWAY PREJUDICIAL TO THE INTEREST OF THIS COMPANY, SHALL NOT BE REPRODUCED OR COPIED IN WHOLE OR IN PART, AND SHALL BE RETURNED UPON REQUEST.

**GENERAL CONDITIONS**  
P.D.I. WILL NOT BE LIABLE FOR ANY ERRORS OCCURRING TO OTHER TRADES THROUGH THE USE OF THIS DRAWING.  
CONTRACTOR TO CHECK ALL DIMENSIONS AT JOB AS P.D.I. ASSUMES NO RESPONSIBILITY FOR GENERAL BUILDING DIMENSIONS.

- (1) PR SH-461 6 WAY ADJUST HINGES FASTEN TO FRAME W/ (2) 1/2-13 x 1 1/4" LG SHCS FASTEN TO DOOR W/ (3) 1/2-13 x 1 1/2" LG SHCS
- MIN REQD FOR HINGE ADJUST

DATE	MK	DESCRIPTION	BY
REVISIONS			
CUSTOMER:			
PROJECT:			
PROTECTIVE DOOR INDUSTRIES HARVEY, ILLINOIS 60426			
<b>TITLE</b> DB-X PAIR BLAST RESISTANT DOOR AND FRAME			
DWG BY	MF	CHKD BY	
DATE	3/22/11	DATE	
SCALE		QA	
DWG NO.	1918-11	SHT NO.	2